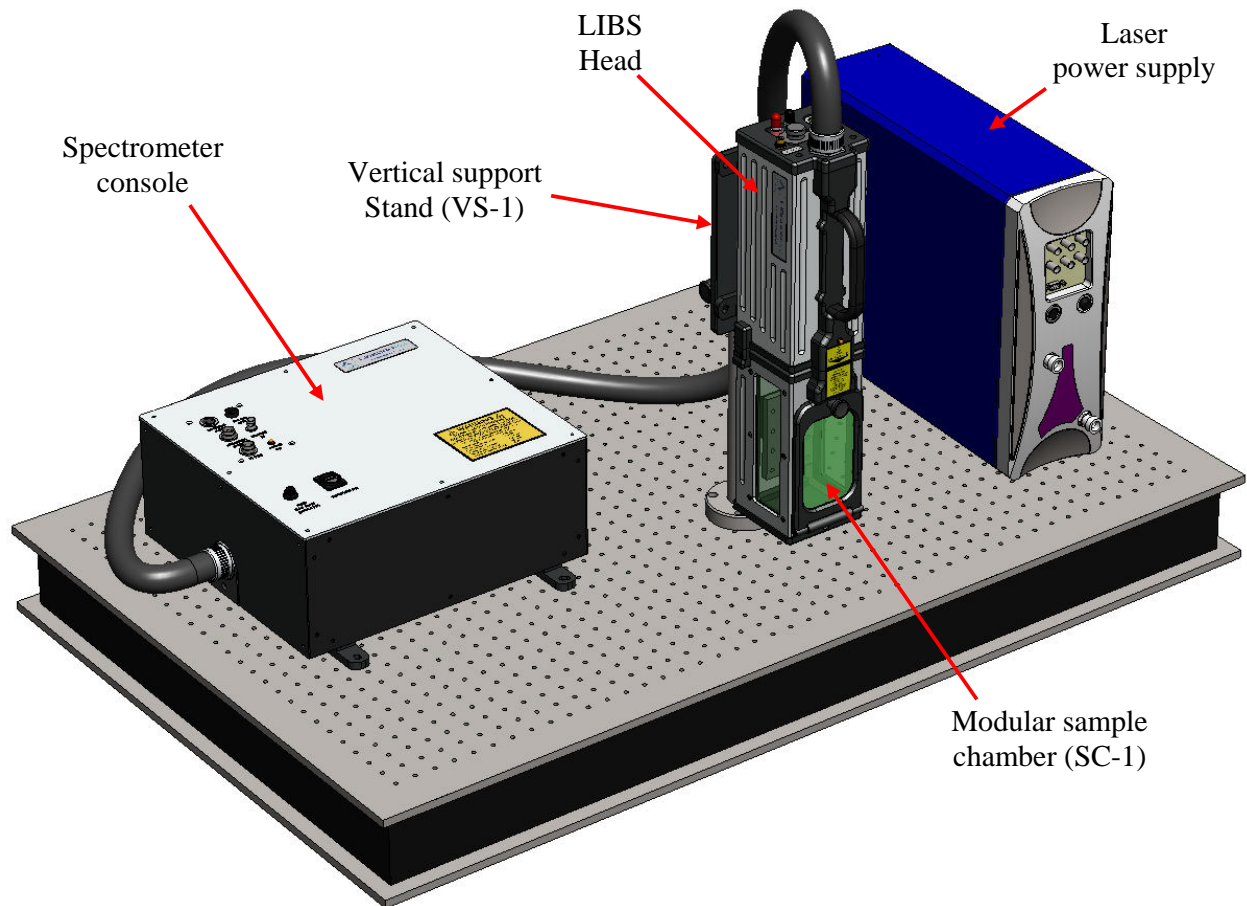
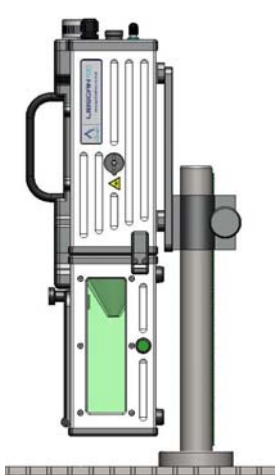
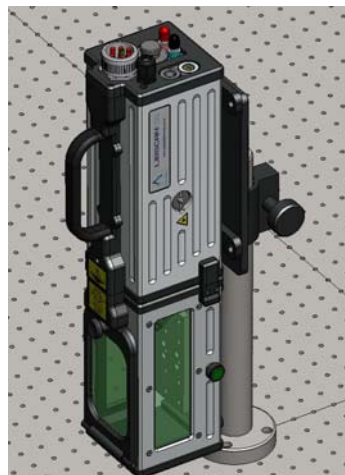


Application Note**LIBSCAN Modular LIBS System**

Versatile, adaptable, upgradeable – for laboratory and field use

**Setup and configuration options (using vertical support stand VS-1)**Vertical orientation with SC-1 sample chamber
(Class 1 laser product)Vertical orientation without sample chamber
(Class 4 laser product)**Setup and configuration options (modular sample chamber C-1 used horizontally)**

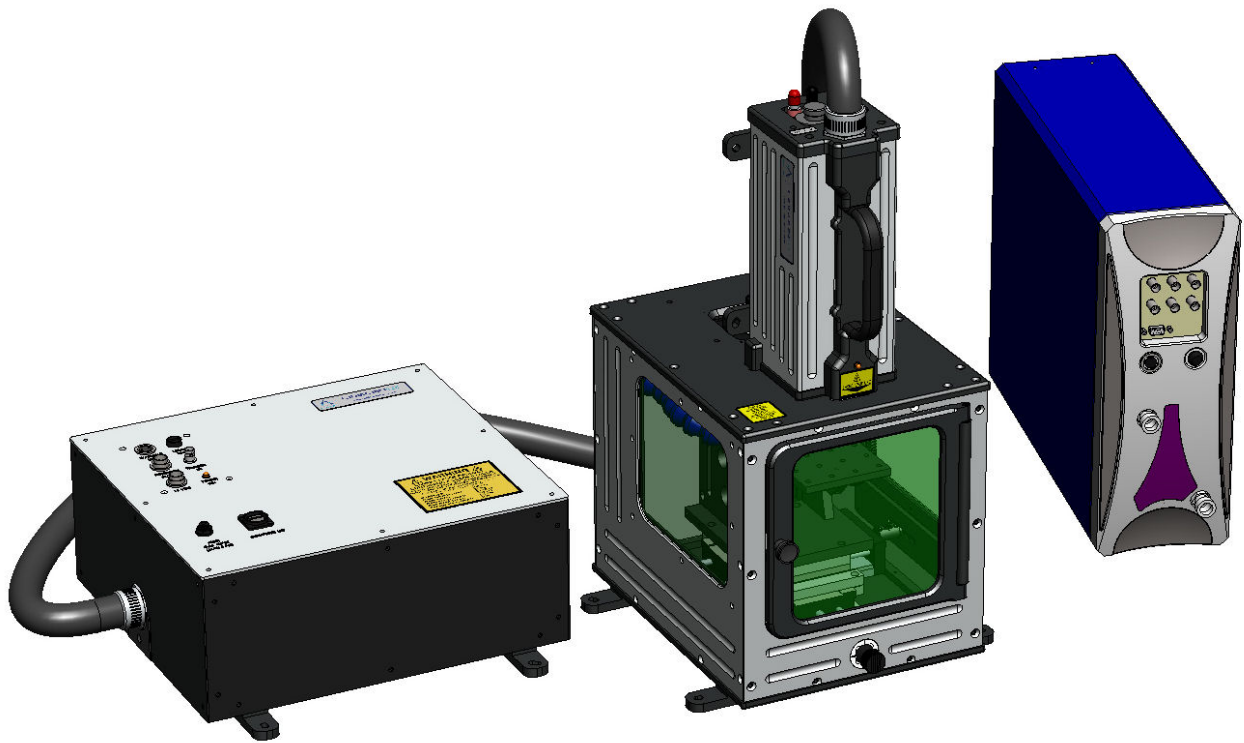


Setup and configuration options (free-style)



Free-style use of LIBSCAN for analysing large components ("open-beam", Class 4 laser product)

Setup and configuration options (SC-2L modular sample chamber)



Setup and configuration options ("open beam" using VS-1 vertical support stand)



Setup and configuration options (optional Imaging Kit)

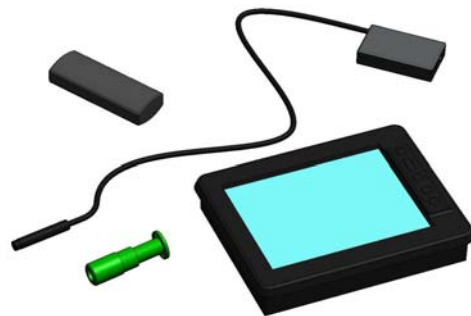


Blue collection lens holders – UV-VIS channels
Red collection lens holder – VIS-NIR channels

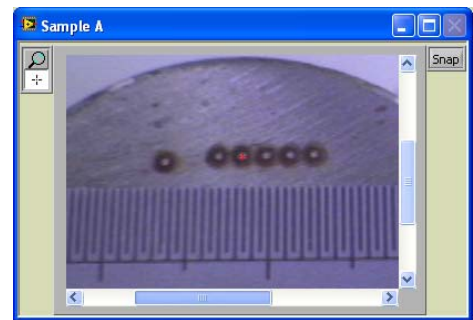
Green tube at 12 O’Clock position is the housing for the miniature colour CCD camera



Front view of LIBS head



Imaging Kit (IMG-1)



Camera view of sample